



MADISON COUNTY BOARD OF SUPERVISORS

125 West North Street • Post Office Box 608
Canton, Mississippi 39046
601-855-5500 • Facsimile 601-855-5759
www.madison-co.com

January 2, 2013

Banks Engineering & Surveying, Inc.
115 Lone Wolf Drive, Suite B
Madison, MS 39110

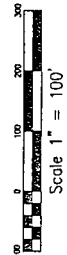
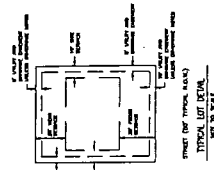
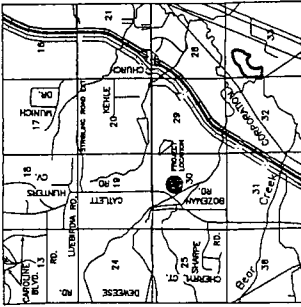
Re: Preliminary Plat, Belle Terre, Phase III

Dear Nolan,

The preliminary plat referenced above complies with all County regulations for the R-2 District.
If you have any questions, please advise.

Sincerely,

Brad Sellers, Administrator
Planning and Zoning

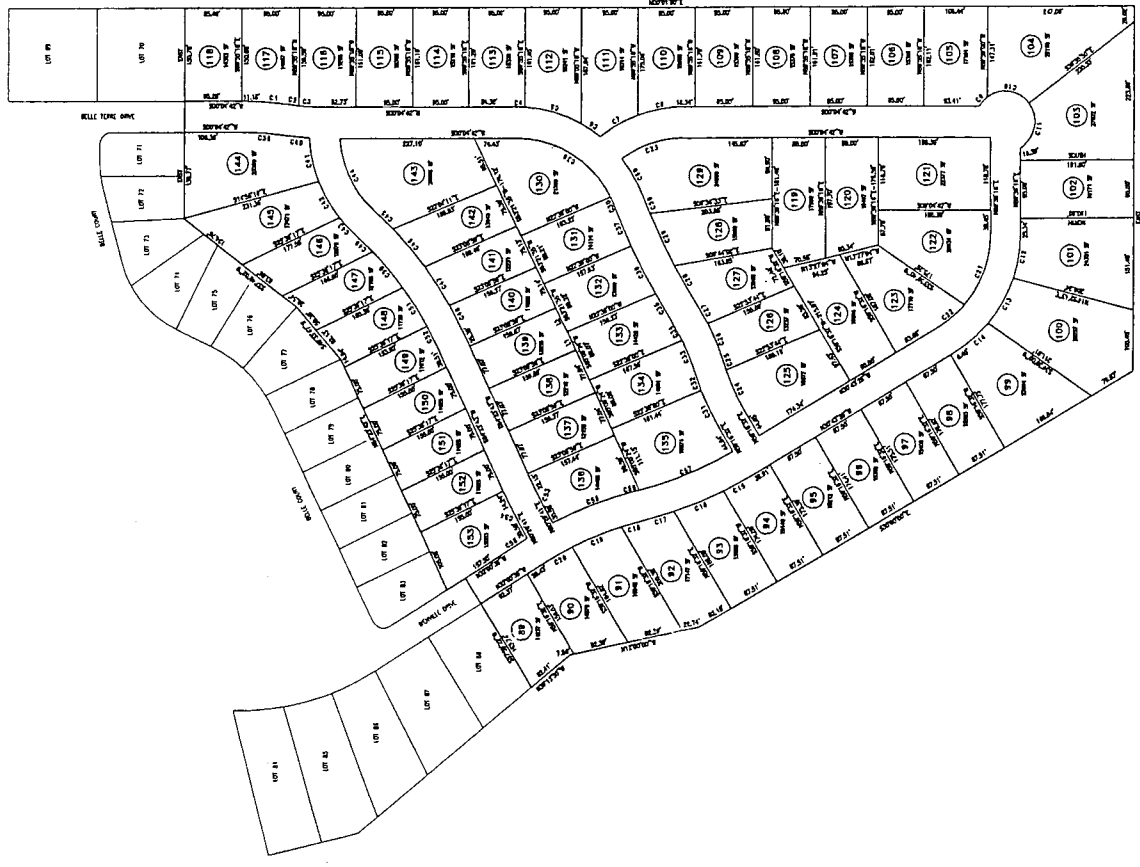


LOT NO.	AREA (SQ. FT.)	AREA (ACRES)
1	10,000	0.23
2	10,000	0.23
3	10,000	0.23
4	10,000	0.23
5	10,000	0.23
6	10,000	0.23
7	10,000	0.23
8	10,000	0.23
9	10,000	0.23
10	10,000	0.23
11	10,000	0.23
12	10,000	0.23
13	10,000	0.23
14	10,000	0.23
15	10,000	0.23
16	10,000	0.23
17	10,000	0.23
18	10,000	0.23
19	10,000	0.23
20	10,000	0.23
21	10,000	0.23
22	10,000	0.23
23	10,000	0.23
24	10,000	0.23
25	10,000	0.23
26	10,000	0.23
27	10,000	0.23
28	10,000	0.23
29	10,000	0.23
30	10,000	0.23
31	10,000	0.23
32	10,000	0.23
33	10,000	0.23
34	10,000	0.23
35	10,000	0.23
36	10,000	0.23
37	10,000	0.23
38	10,000	0.23
39	10,000	0.23
40	10,000	0.23
41	10,000	0.23
42	10,000	0.23
43	10,000	0.23
44	10,000	0.23
45	10,000	0.23
46	10,000	0.23
47	10,000	0.23
48	10,000	0.23
49	10,000	0.23
50	10,000	0.23
51	10,000	0.23
52	10,000	0.23
53	10,000	0.23
54	10,000	0.23
55	10,000	0.23
56	10,000	0.23
57	10,000	0.23
58	10,000	0.23
59	10,000	0.23
60	10,000	0.23
61	10,000	0.23
62	10,000	0.23
63	10,000	0.23
64	10,000	0.23
65	10,000	0.23
66	10,000	0.23
67	10,000	0.23
68	10,000	0.23
69	10,000	0.23
70	10,000	0.23
71	10,000	0.23
72	10,000	0.23
73	10,000	0.23
74	10,000	0.23
75	10,000	0.23
76	10,000	0.23
77	10,000	0.23
78	10,000	0.23
79	10,000	0.23
80	10,000	0.23
81	10,000	0.23
82	10,000	0.23
83	10,000	0.23
84	10,000	0.23
85	10,000	0.23
86	10,000	0.23
87	10,000	0.23
88	10,000	0.23
89	10,000	0.23
90	10,000	0.23
91	10,000	0.23
92	10,000	0.23
93	10,000	0.23
94	10,000	0.23
95	10,000	0.23
96	10,000	0.23
97	10,000	0.23
98	10,000	0.23
99	10,000	0.23
100	10,000	0.23

LOT NO.	AREA (SQ. FT.)	AREA (ACRES)
1	10,000	0.23
2	10,000	0.23
3	10,000	0.23
4	10,000	0.23
5	10,000	0.23
6	10,000	0.23
7	10,000	0.23
8	10,000	0.23
9	10,000	0.23
10	10,000	0.23
11	10,000	0.23
12	10,000	0.23
13	10,000	0.23
14	10,000	0.23
15	10,000	0.23
16	10,000	0.23
17	10,000	0.23
18	10,000	0.23
19	10,000	0.23
20	10,000	0.23
21	10,000	0.23
22	10,000	0.23
23	10,000	0.23
24	10,000	0.23
25	10,000	0.23
26	10,000	0.23
27	10,000	0.23
28	10,000	0.23
29	10,000	0.23
30	10,000	0.23
31	10,000	0.23
32	10,000	0.23
33	10,000	0.23
34	10,000	0.23
35	10,000	0.23
36	10,000	0.23
37	10,000	0.23
38	10,000	0.23
39	10,000	0.23
40	10,000	0.23
41	10,000	0.23
42	10,000	0.23
43	10,000	0.23
44	10,000	0.23
45	10,000	0.23
46	10,000	0.23
47	10,000	0.23
48	10,000	0.23
49	10,000	0.23
50	10,000	0.23
51	10,000	0.23
52	10,000	0.23
53	10,000	0.23
54	10,000	0.23
55	10,000	0.23
56	10,000	0.23
57	10,000	0.23
58	10,000	0.23
59	10,000	0.23
60	10,000	0.23
61	10,000	0.23
62	10,000	0.23
63	10,000	0.23
64	10,000	0.23
65	10,000	0.23
66	10,000	0.23
67	10,000	0.23
68	10,000	0.23
69	10,000	0.23
70	10,000	0.23
71	10,000	0.23
72	10,000	0.23
73	10,000	0.23
74	10,000	0.23
75	10,000	0.23
76	10,000	0.23
77	10,000	0.23
78	10,000	0.23
79	10,000	0.23
80	10,000	0.23
81	10,000	0.23
82	10,000	0.23
83	10,000	0.23
84	10,000	0.23
85	10,000	0.23
86	10,000	0.23
87	10,000	0.23
88	10,000	0.23
89	10,000	0.23
90	10,000	0.23
91	10,000	0.23
92	10,000	0.23
93	10,000	0.23
94	10,000	0.23
95	10,000	0.23
96	10,000	0.23
97	10,000	0.23
98	10,000	0.23
99	10,000	0.23
100	10,000	0.23

GENERAL NOTES

- 1.) WATER AND SEWER DESIGN FOR THIS PROJECT WILL BE PROVIDED BY BEAR CREEK WATER ASSOCIATION.
- 2.) THE PRESENT ZONING CLASSIFICATION OF THE SUBJECT PROPERTY IS "R-2".
- 3.) LOTS PROPOSED ON THIS PRELIMINARY PLAT ARE SHOWN ON THIS PRELIMINARY PLAT AS 29.26 ACRES.
- 4.) ALL STREETS SHOWN ARE MINIMUM 50' RIGHT-OF-WAY.
- 5.) THE SUBJECT PROPERTY LIES WITHIN SECTION 30, TOWNSHIP 8 NORTH, RANGE 2 EAST, MADISON COUNTY, MISSISSIPPI.
- 6.) EASEMENTS AND EASEMENT LOCATIONS TO BE SHOWN ON THE FINAL RECORDED PLAT.
- 7.) STREET NAMES ARE SUBJECT TO APPROVAL BY MADISON COUNTY E-811.
- 8.) ALL LOTS SHOWN HEREON ARE MINIMUM 10000 SQUARE FEET.



DATE: _____

BY: _____

PROJECT: PRELIMINARY PLAT
BELLE TERRE, PART III
MADISON COUNTY, MISSISSIPPI

CLIENT: BELLE TERRE DEVELOPMENT

BANKS ENGINEERING & SURVEYING, INC.
115 LORE WOLF DRIVE SUITE B • MADISON, MS 39110
OFFICE (601) 407-1240 • FAX (601) 407-1245

SCALE: 1" = 100'

PROJECT NO.: 453-12

DATE OF DRAWING: 11-1-12

DRAWN BY: _____

CHECKED BY: _____

APPROVED BY: _____



WARNOCK & ASSOCIATES, LLC

ENGINEERING, MANAGEMENT & PLANNING

January 2, 2012

Banks Engineering & Surveying, Inc.
115 Lone Wolf Drive, Ste B
Madison, MS 39110

ATTN.: Nolan P. Williamson, P.E.

RE: **Belle Terre, Part III**
Preliminary Plat
Madison County, MS

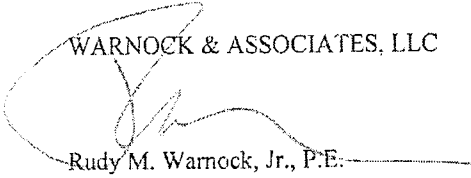
Dear Nolan:

This is to advise that we have reviewed the preliminary plat for the above referenced project. Upon our review we have found the preliminary plat for Belle Terre, Part III conforms to the *Madison County Subdivision Regulations*. When you assemble the construction plans be advised that a complete hydraulic analysis of the existing detention facility will have to be done and submitted with the construction plans. Please consider this letter authorization to commence with construction plans.

If you have any questions concerning my review please feel free to me at (601) 855-2250.

Sincerely,

WARNOCK & ASSOCIATES, LLC



Rudy M. Warnock, Jr., P.E.
County Engineer

cc: Mr. Brad Sellers, County Administrator
Mr. Scott Weeks, County Inspector
File

"DEDICATED TO EXCELLENCE IN ENGINEERING"

158 W. CENTER STREET
CANTON, MS 39046
601-855-2250 PHONE
601-855-2599 FAX
www.warnockandassociates.com